

A House Where

LOVE

Can Dwell

St. Anne Catholic Church | Southborough, MA

A LETTER FROM FATHER ALBERT

"Each community is called to create a 'God-enlightened space in which to experience the presence of the risen Lord.'"

Sharing the Word and celebrating the Eucharist together fosters community and makes us a holy and missionary community."

Pope Francis quoting
St. Pope John Paul II.

DEAR ST. ANNE FAMILY,

What a joy and blessing it has been for me to serve you all for the past five years. As you know, our St. Anne church was built in 1886 and this year, we celebrate the 135th year of its founding. Through the years, twenty-two pastors have served this wonderful parish and millions of parishioners have entered this holy place to encounter God, deepen their faith, receive sacraments, be comforted and experience the love and support of its members. I must say that God has been so good and gracious to me as I celebrated my own 25th anniversary as a priest in this faith family. It's such a blessing to all of us that those parish ancestors built and maintained this home in order for us to gather and worship God. We not only thank them for their sacrifices but remind ourselves of the responsibilities to pass on this beautiful holy place and faith to the generations to follow.

Our Church serves as a beacon of hope as we continue serving the spiritual and social needs of this community. The theme of our capital campaign is **"A HOUSE WHERE LOVE CAN DWELL."** The enclosed brochure outlines the things that we need to do for our campus, especially in the church. We ask that you prayerfully review them and support them as much as you can.

There is no perfect time for anyone to have a capital campaign. All we can do is trust in the Lord and our commitment to the parish with our usual generous response. Obviously because resources and obligations vary, not every person or family can pledge the same amount; however, all can make the same size sacrifice. Indeed, the very basis of our present campaign is equal sacrifice not equal amount. May our gifts, therefore, be a reflection of our true appreciation of the gifts that God has given us.

This capital campaign is a serious and important challenge to all of us in the parish. Parishioner Peg Camp will lead this campaign with the support of other chairpersons. We must pray for its success, lend our many God-given talents to its completion, and make significant financial sacrifice on all our parts to make it happen. Working as one Body in Christ, we can ensure that our sacrifices at this time to St. Anne will bear fruit in the years to come. With prayers and gratitude, we have full faith that God, who has begun this good work in us, will also bring it to a successful completion.

In the gospel of Luke Jesus says, "Give and gifts will be given to you; a good measure, packed together, shaken down, and overflowing, will be poured into your lap." (Lk 6:38). The Lord gives us more than we give to Him. May the Lord bless and prosper the work of our hands, as we join together to build a stronger St. Anne community. Thank you in advance for your prayers and your generous support.

Saint Anne, pray for us!


Father Albert Irudayasamy, Pastor



MASTER PLAN

We, the people of St. Anne Parish, Southborough, in the Diocese of Worcester are called through Baptism to become one faith family. We commit ourselves to embody the presence of Christ in Word and Sacrament; by using our ministries to welcome all who are seeking Jesus and to share in the life and work of our Catholic faith. In the spirit of truth of the Holy Trinity, we will use our time, talents and treasure to answer God's command to love one another as He has loved us, in holy worship, prayer, Catechetical formation for all, evangelization and service to others. This design seeks to expand our church footprint, improve our infrastructure while also improving our worship space to reflect our parish mission in welcoming others, with a commitment to future generations.

In the Book of Exodus, God reminds Moses to remove his sandals because he was standing on Holy Ground, which was sanctified by God's presence. The interior of every Church is also Holy Ground for it too is sanctified by the presence of God. Therefore, every Church interior should be a work of art to reflect the presence of the Holy One while giving praise to God. Fittingly, the interior of such a place should be filled with peace, inspire worship, and motivate prayer while kindling charity in service to others. It is a special opportunity to maintain and improve such a holy place.

OUR CHALLENGE

God has blessed our parish with the support of so many generous parishioners who consistently and sacrificially give. With our new campaign, A House Where Love Can Dwell, we want to complete necessary capital improvement projects, expand the entry to the church and build a new Adoration Chapel. The capital improvement needs, based on urgency and benefits to Parish Community, are:

New Construction

- ✦ New Entry to Church
 - ✦ Bathroom - Unisex
 - ✦ Social Gathering Space
 - ✦ Confessional
 - ✦ Expanded Choir Loft
 - ✦ New Front Entrance Gradation to Eliminate Steps
- ✦ New Adoration Chapel
- ✦ Updated Lighting
- ✦ Updated HVAC
- ✦ Accessible Sanctuary (ADA)
- ✦ Siding on Offices
- ✦ New Septic System

Renovation

- ✦ Refresh to Parish Hall
- ✦ Renovate Bathrooms
- ✦ Painting and Deep Cleaning
- ✦ Exterior of Church



We all must work hard in this campaign to take care of present and future capital improvements. We want nothing to interfere with the primary mission of our vibrant parish. Rooted in faith, remember how far we have come by working together. It will require hard work and sacrifice for us as a family to continue growing for tomorrow.

FRONT CONCEPT



REAR CONCEPT





PROJECT HIGHLIGHTS

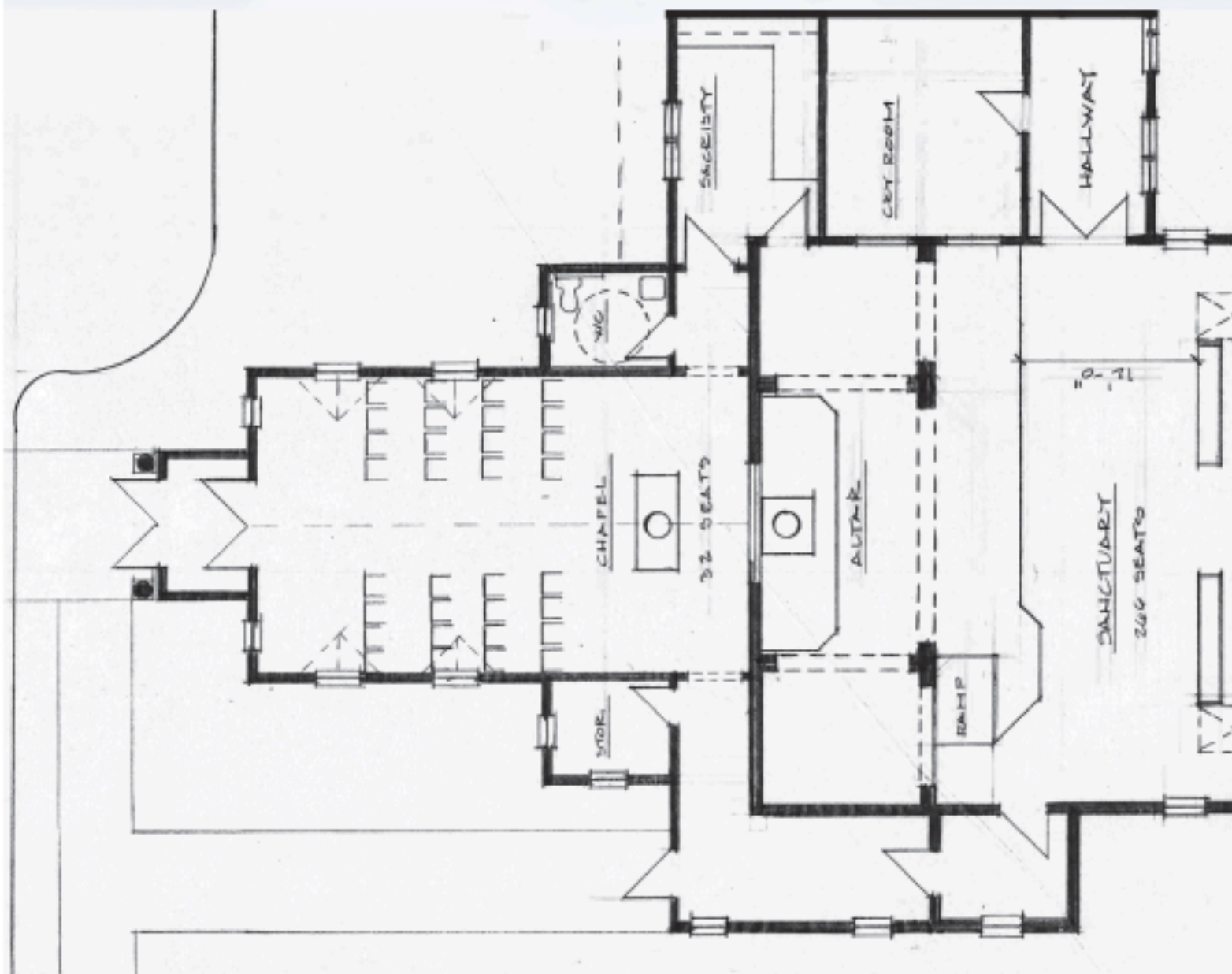
In 2020 we formed the Campus Planning Committee (a subcommittee of the Parish Council) to look into the present and future needs of our parish. The Campus Planning Committee consists of Fr. Albert, Tom Gittins, Brent Trottier, Bill Poutre, George Stagno, Gregory Conigliaro, Monica Shay and Samantha Poutre. We have worked so hard, spending 1000+ hours, to discuss and plan out the best use of our facilities for the generations to come. The Campus Planning Committee has come up with the best plans, which we will do phase by phase. Once everything is completed, we can proudly say that we did the best that the Lord asked us to do.

Our costs associated with the Diocesan Legacy of Hope needs combined with our church expansion and renovation plans (Phase 1), are estimated to be in the neighborhood of \$3M. We hope to raise a minimum of \$1.5M in this campaign and have set a challenge goal of \$2M. With the monies raised in this campaign, plus \$1M from our savings and a supplemental diocesan loan, if necessary, we hope to be able to move forward with Phase I of our project in the near future. To accomplish this, we need your involvement; you have an important voice in our future. Please consider how the Lord is calling you to support St. Anne Catholic Church. The future of our faith community remains in our hands, and the future is very bright.

The following are the preliminary estimated costs for the renovations of our Church. These estimated costs attempt to address our current needs and those of the future.

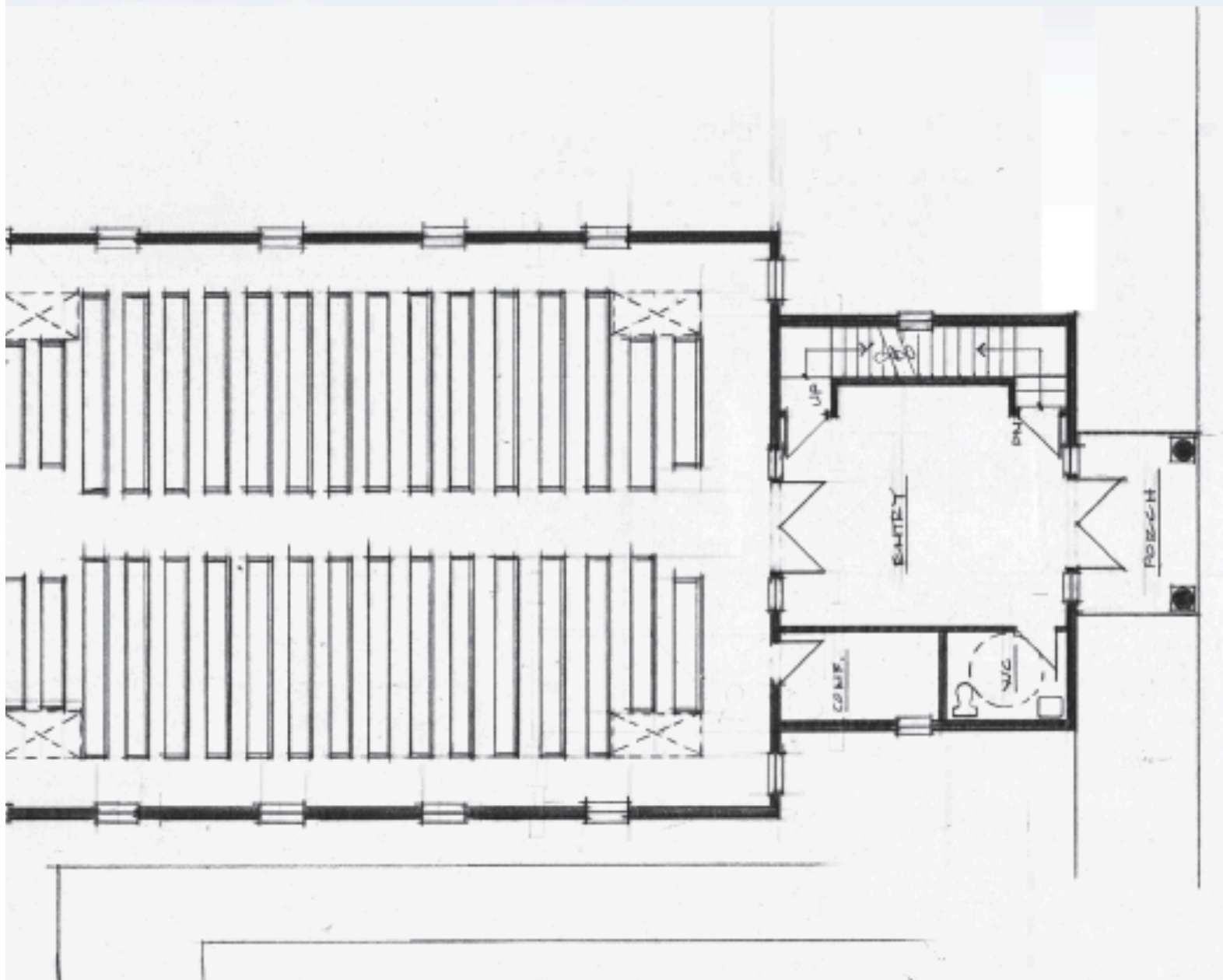
Phase 1 & Legacy of Hope	~\$3,000,000
Less Savings	-\$1,000,000
Total Challenge Goal	~\$2,000,000

OUR VISION



FLOOR PLAN

Please Note: The design continues to evolve as it is being refined.



HOW YOU CAN GET INVOLVED

Throughout the **A House Where Love Can Dwell** Capital Campaign, Father Albert, the Capital Campaign Committee and volunteer workers will reach out to all members of our community to communicate the goals of our parish and describe how everyone can get involved.

Several important events are being held in order to give every parish family an opportunity to participate:

- 1) Every registered family will be invited to attend one of a series of campaign receptions that will be scheduled to allow all parishioners the opportunity to gather and to learn about the needs of our parish.
- 2) The families who do not attend a campaign reception will be able to read about our building and renovation plans through this campaign brochure, which will be mailed to their homes.
- 3) Those who do not respond by Commitment Weekend will be personally contacted by fellow parishioners who will give their time to the task of increasing the awareness of this campaign.

During this campaign, we are asking everyone who calls St. Anne home to:

1. Pray for the success of the Campaign
2. Be an ambassador for St. Anne by getting involved and by enthusiastically sharing this information with as many people as you can to encourage them to get involved.
3. Make your sacrificial pledge.



The goal of this renovation campaign is to raise a minimum of \$1.5 million and a challenge goal of \$2 million. Every member of our community is integral to our success in reaching this goal, and, therefore, each family is asked to consider making a pledge to the campaign to the best of their ability. No one can tell you how much you should give. The individual parishioner/family is the only one who actually decides what to contribute, since the financial obligations of each family are different.

All St. Anne families are asked to consider a pledge of \$4,000 or more, payable over 4 years. A pledge of \$4,000, after a 10% down payment of \$400, is \$75 per month for four years. This equates to \$18.75 a week or less than \$2.50 a day! We know our predecessors made great sacrifices to build our church building. We sacrifice to keep the work alive.

**It is with gratitude that
we return to the Lord
a portion of the gifts
He has given to us.**

Individuals who are financially capable of pledging \$10,000, \$25,000, \$50,000 or more, are asked to step forward and become leaders of our campaign. Please review the Suggested Gift Plans on the following page and choose a plan that is right for you and your family.

**This is our parish and through
everyone's participation
we can achieve our goals.**



LEGACY OF HOPE Diocesan Capital Campaign

The **Legacy of Hope** Capital Campaign will provide the solid foundation upon which our Church will continue to build and enhance the future for Catholics across Worcester County. Financial resources are essential to enable our parishes to continue supporting the journey of faith, spirituality and ministry in the Diocese of Worcester.

The goal to raise \$32 Million will support six priorities:

1. Parish Support: \$12 Million

Fund local parish needs determined by parish leadership. Forty percent of every dollar raised will return to the parish up to the assigned goal. Once the parish surpasses their goal, 60% of all funds above and beyond will be returned.

2. Priests' Retirement and Custodial Care \$12 Million

The current Priests' Retirement Endowment has faced a shortfall over the past six years. Through this campaign, we aim to expand the endowment to ensure that we can continue caring for our priests in retirement.

3. Catholic Education \$4 Million

Help more families attend our Catholic Schools by growing our Catholic School Endowment. Currently, less than 20% of the need is met. Through this campaign, we can assist 150-200 additional families, providing their children with a Catholic Education.

4. Parish-Based Charitable Outreach \$2 Million

Establish an endowment that will assist our parishes with initiating or expanding localized outreach programs such as: food pantries, elder outreach, youth drop-in centers, homeless shelters, addiction support, etc.

5. Parish-Based Evangelization \$1.5 Million

Establish an endowment to assist our parishes with direct funding for evangelization efforts and programs such as: alpha, bible study, CHIRP, Cursillo, Life Teen, Light of the World, RCIA, SEARCH, youth ministry, etc.

6. Cathedral of St. Paul \$500,000

Structural repairs of the bell tower and renovating the pews.

For Parishes participating only in the **Legacy of Hope** capital campaign, a percentage of monies raised will be returned in support of that local parish. As part of our **A House Where Love Can Dwell** Parish Campaign, we have included our commitment toward the **Legacy of Hope** Diocesan Campaign of \$213,532 (60% of our initial goal). By including this commitment, our parish is conducting one all-encompassing campaign versus multiple efforts at the same time. We, as a parish, have agreed to meet this goal over the next four years, while being able to retain all other funds from our **A House Where Love Can Dwell** Parish Campaign. More details on the **Legacy of Hope** Capital Campaign are available on the diocesan website at: <https://worcesterdiocese.org/>.



*In Deuteronomy 16:10
we are reminded that
"the measure of your
own free will offering
should be in proportion
to the blessing the Lord
has bestowed on you".*

SUGGESTED GIFT PLANS

Total Gift	10% Down Payment	4 Annual Payments	8 Semi-Annual Payments	16 Quarterly Payments	48 Monthly Payments	Daily Sacrifice
\$500,000	\$50,000	\$112,500	\$56,250	\$28,125	\$9,375	\$312.50
\$250,000	\$25,000	\$56,250	\$28,125	\$14,063	\$4,688	\$156.25
\$100,000	\$10,000	\$22,500	\$11,250	\$5,625	\$1,875	\$62.50
\$75,000	\$7,500	\$16,875	\$8,438	\$4,219	\$1,406	\$46.88
\$50,000	\$5,000	\$11,250	\$5,625	\$2,813	\$938	\$31.25
\$25,000	\$2,500	\$5,625	\$2,813	\$1,406	\$469	\$15.63
\$15,000	\$1,500	\$3,375	\$1,688	\$844	\$281	\$9.38
\$10,000	\$1,000	\$2,250	\$1,125	\$563	\$188	\$6.25
\$7,500	\$750	\$1,688	\$844	\$422	\$141	\$4.69
\$5,000	\$500	\$1,125	\$563	\$281	\$94	\$3.13
\$4,000	\$400	\$900	\$450	\$225	\$75	\$2.50

All contributions to the campaign are fully tax deductible for those who itemize their taxes! Pledges are not legally binding, but rather an indication of your intention to donate.

AS YOU MAKE YOUR PLEDGE, PLEASE REMEMBER...

- ✦ Payments may be made over a period of four (4) years.
- ✦ Pledge payments are in addition to your regular weekly offertory contribution. Your pledge payments to this campaign will be used for the renovation and remodeling outlined in this brochure.
- ✦ Payment reminders and a special payment envelope will be mailed to you in accordance with the payment plan you choose. **Please make checks payable to: St. Anne Capital Campaign.**
- ✦ Pledge payments are fully deductible for tax purposes.



Not everyone can make the same size gift; but everyone can make an equal sacrifice.

Whether you participate by attending a campaign reception, responding at Mass or by mail, or by graciously receiving a visit from a fellow parishioner, it is your active involvement that will make this campaign a success.

GIVING OPTIONS

Pledges Via Cash or Check: Simply complete your pledge card by indicating the amount of your pledge and down payment (optional, but encouraged).

- Select your payment schedule, i.e., monthly, quarterly, semi-annual or annual payments.
- Please make checks payable to **St. Anne Capital Campaign**.
- Payment reminders will be mailed along with a special payment envelope in accordance with the plan you choose.
- Once completed, please return your pledge card in the weekly collection, bring it by the parish office or return it in the mail.

Gifts of Stock: Donors can use their own broker/agent or the parish agent to transfer and sell stock. When you make a gift of appreciated publicly traded securities (including stocks) you have owned for at least one year, you avoid all capital gains taxes. In addition, you may take a charitable deduction for the full market value of those securities on the date of your gift. To make a gift of stock or other securities, please contact James B. Kenary IV at 1-800-451-4027 / (508-751-5610). If you have any further questions regarding the transfer of stock or other securities, please contact the Fiscal Affairs Office of the diocese at (508) 929-4355.

Online Giving - Pledges Via Credit/Debit/Automatic Draft:

St. Anne Parish currently partners with eCatholic and CardPointe/BluePay for easy and secure on-line giving. Both credit cards and checks are accepted. If you are a current WeShare (ParishPay) member or would like to donate via the WeShare website, please feel free to use this link to WeShare: <https://stannesouthborough.churchgiving.com>.

- Online Giving is a direct payment program whereby your contribution is debited automatically from your checking, savings, or credit card account into our church's bank account. Follow the instructions to either log in to an existing account or create a new account.

Gifts From Retirement Accounts: The IRA Charitable Rollover provision of the 2015 PATH (Protecting Americans from Tax Hikes) Act permits individuals age 70.5 or older to contribute up to \$100,000 from a qualifying retirement account directly to Church of St. Anne, without recognizing the assets transferred to the charity as income. Please contact the Fiscal Affairs Office of the diocese at (508) 929-4355 and your financial advisor for additional information concerning gifts via retirement accounts.

Gifts of Property, Life Insurance, Annuities, Wills or Bequests:

There are different ways to support St. Anne both today and in the years to come via planned giving.

- Families or individuals can make gifts of real estate, personal property, automobiles, life insurance, estate bequests, annuities or charitable remainder trusts.
- For substantial gifts of property other than marketable securities, the IRS requires an appraisal. Please contact the campaign office for more information.



Tax Advantages of Charitable Giving

Charitable contributions to our campaign are deductible for those who itemize their taxes. Because each situation is unique, we urge you to discuss various gift options with your family and possibly your financial advisors to determine what type of gift is most beneficial and most appropriate for your situation.

If you have any questions about the campaign or making your pledge, please contact the Parish Office, 508-485-0141.



CAMPAIGN PRAYER

LOVING GOD,

At this time in the life of our St. Anne parish, we turn to you with grateful hearts for what we have, and with great anticipation for what is yet to be. Bless us with a sense of unity, a spirit of cooperation, and a generous heart as we face the responsibilities and challenges of this undertaking. We know there is much to do. We believe our goals are rooted in Your Word and in Your Work. Please guide us, strengthen us and bless us with Your providence, now and through the years to come. In Jesus' Name and the intercession of St. Anne, we pray.

AMEN.

A SPECIAL THANK YOU

Many people contribute to the life of our parish and provide vision for our future. Our deepest gratitude extends to those who have given the gifts of their time and talents to make this project a success.

FUNDRAISING CONSULTANT



GUIDANCE *in* GIVING

www.guidanceingiving.com

